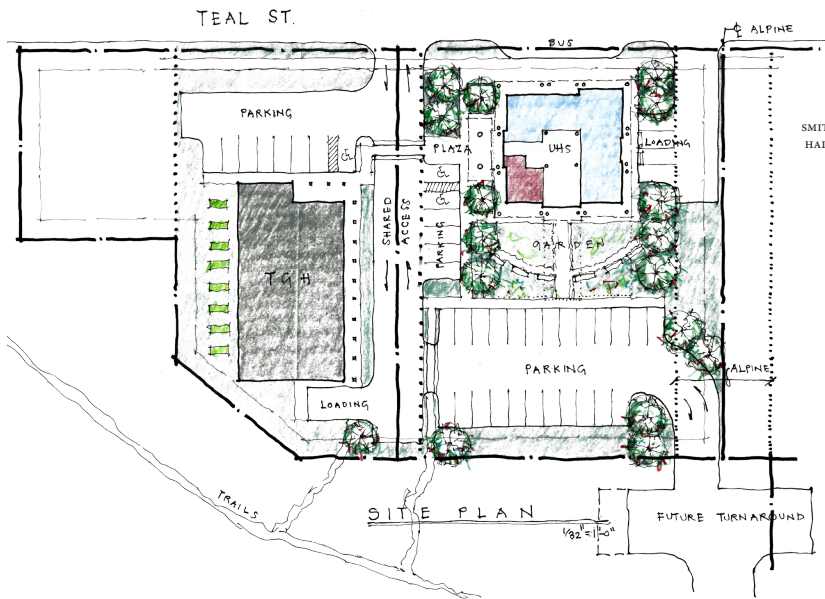


Southeast Community Services Campus

Stronger Together



Conceptual Site Plan for SE Community Services Campus



Conceptual- Site Relationship



*Conceptual- Entry Elevation
SE Community Services Center*

A coalition of community nonprofits, in coordination with the Glory Hall (TGH), plans to develop a new social services campus adjacent to Jordan Creek and near the Juneau Airport, in the Mendenhall Valley.

The nonprofit shared building, the Southeast Community Services Center, will include individual offices for each social service agency, as well as flexible meeting and gathering spaces, also available to the community. TGH will construct a shelter, care center, and meal distribution facility.

Working together, we will have the greatest collective positive impact on the lives of elders, youth, low-income community members and people experiencing disabilities. The Southeast Community Services Center will serve our community with enhanced program coordination that is accessible, collaborative and sustainable.

The Center & new TGH facility are designed to be uplifting- a place of dignity for both our beneficiaries and employees. The campus buildings will be sited to maximize natural light, views, green space, gardens, bus access, and safe pedestrian links. The campus is ideally located in close proximity to existing resources such as Juneau Youth Services, and St. Vincent de Paul's transitional and supportive housing programs.

The Southeast Community Services Center will facilitate greater ease with on-site referrals to other social service nonprofit agencies, both in-house and campus wide. The one stop model will help more people access the services they need, increase the options available to them and result in stronger outcomes. Co-location allows the nonprofits to capitalize on individual and collective strengths, freeing up more time and resources to focus on our collective mission.

*Together,
we have the greatest
collective, positive impact
on the lives
of the people
we serve.*

Collective Social Services



The Southeast Community Services Center will be owned and operated by United Human Services of SE Alaska (UHS) a 501(c)(3) nonprofit dedicated to creating efficiencies to maximize organizational resources, build strong synergistic working relationships among tenants, and improve access & efficiency for people seeking services.

Our nonprofit partners include: Southeast Alaska Independent Living (SAIL/ORCA), Disability Law Center of Alaska, National Alliance on Mental Illness (NAMI), Alaska Legal Services, Big Brothers Big Sisters of Alaska, and United Way of Southeast Alaska. Together, these agencies provide diverse and comprehensive services for all ages and abilities within our community, and throughout Southeast Alaska.

For more information on the Southeast Community Services Center, please contact:

Joan O'Keefe, UHS Executive Director @ 907-523-4430.



The Glory Hall



The Glory Hall (TGH) provides food, shelter, and compassion to those most in need.

The current downtown facility is not physically accessible to patrons with disabilities and has a number of significant building issues. To best meet the needs of our community members experiencing homelessness, it is critical that the new shelter be built as soon as possible. The proximity to supportive services is ideal, establishing efficient access for a successful transition from homelessness.

The new facility will feature a secure entry and Day Room, space to store private belongings, an outside garden, and a secured outside space for patrons, staff and visitors to relax and connect with nature.

For more information on Juneau's emergency shelter needs and transitioning from homelessness, please contact:
Mariya Lovishchuk @ 907-957-2885.

THE GLORY HALL

Emergency Shelter
Soup Kitchen + Care Center
feedjuneau.org



Join us !!!

The Southeast Community Services Center planning committee is recruiting volunteers to lend expertise and enthusiasm toward this exciting project.

Can you help with funding, time, or advocacy?

For more information contact:

Joan O'Keefe, c/o SAIL @ 907-523-4430

